

ALCOHOL INFORMATION - SOUTH AYRSHIRE

Consequences of Excess Drinking



In 2016 801 South Ayrshire residents were admitted to hospital due to alcohol



That is the equivalent of 2 South Ayrshire residents being admitted to hospital every day for a whole year

Drinking and Young people



In 2014 in South Ayrshire there were 69 hospitalisations of young people aged 11-25 due to alcohol



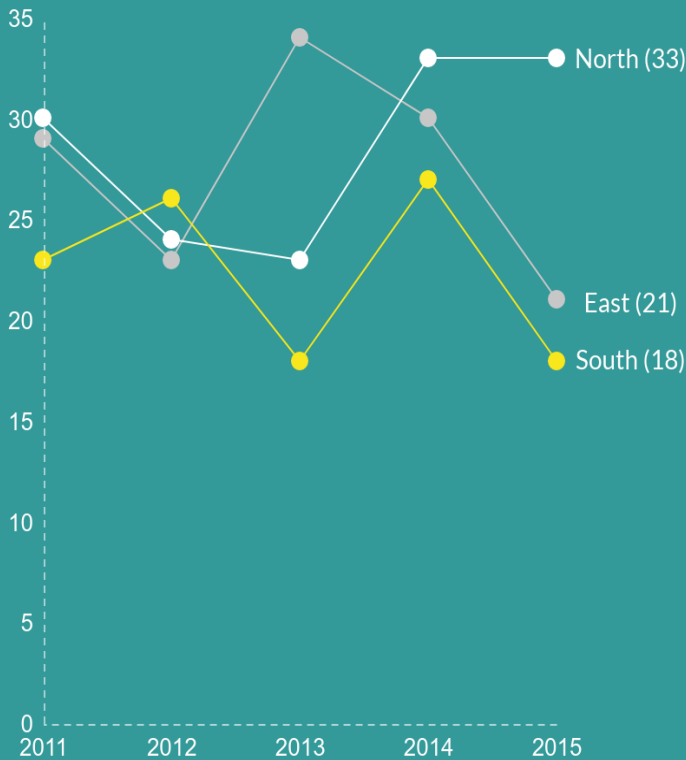
10.2% of 4th year (15 y.o.) pupils in South Ayrshire drink alcohol on a weekly basis

South Ayrshire figures are statistically significantly worse than the Scottish average rate of alcohol related hospital stays in young people aged 11-25.

In South Ayrshire there are 27 Children on the child protection register where parental alcohol misuse is a factor - significantly worse than the Scottish Average



Alcohol Related Deaths Ayrshire 2014/15

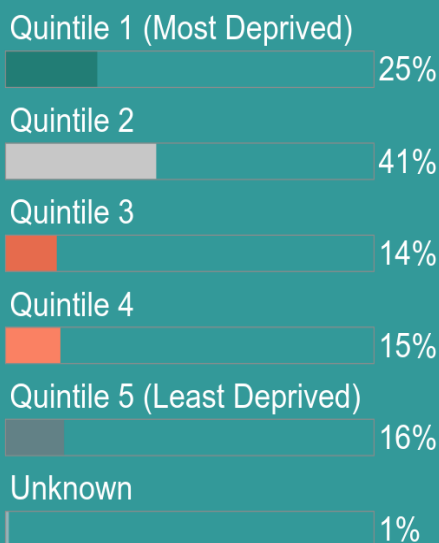


Average of 22 Alcohol related deaths per year in South Ayrshire

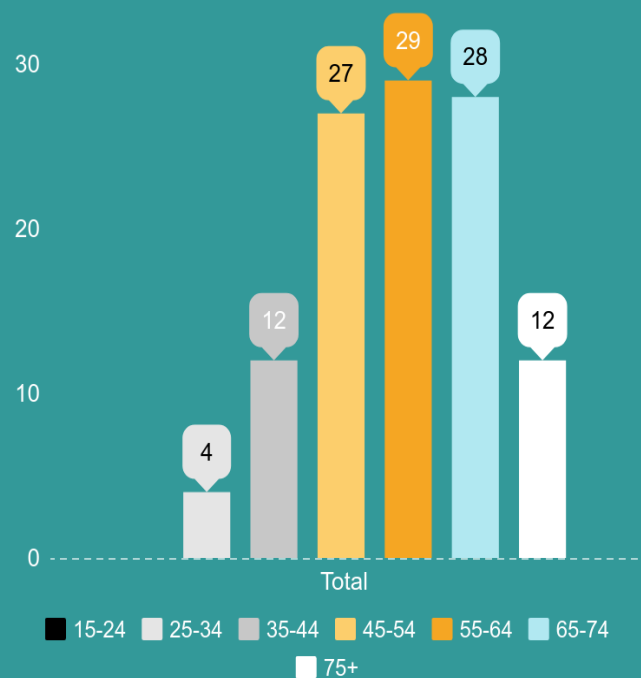


NRS - analysed by ISD (2011-15)

Alcohol Deaths South Ayrshire 2011-15



Alcohol Deaths South Ayrshire 2011-15 by Age



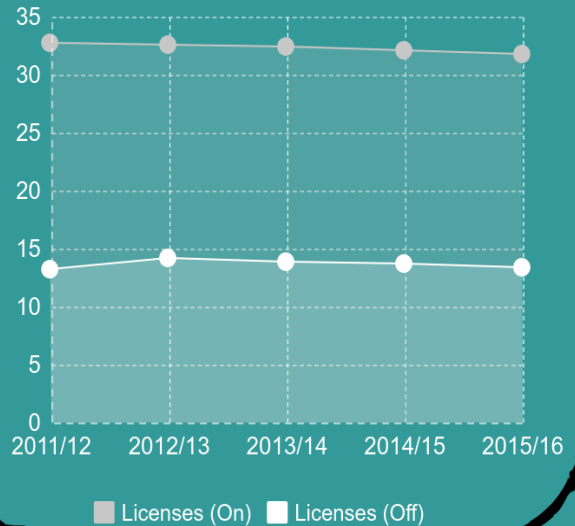
Availability of Alcohol



There are 414 licenses in use in South Ayrshire

Scottish liquor licensing statistics 2015/16

The rate of licenses per 100,000 people



Research from Edinburgh and Glasgow University Shows:
Areas with higher outlet density have higher rates of alcohol hospitalisations and deaths.

Who is most at risk of an alcohol related hospitalisation?



- Male
- Middle - Aged
- From deprived area

New Guidelines

These aim to reduce risk of mortality from cancers or other diseases. The links between alcohol and cancer were not fully understood in the original 1995 guidelines.

Revised Guidelines released by the Scottish Government in 2016 recommend that both men and women do not consume more than:



14 units per week



OR



OR



6 pints (568ml) of
average strength Beer
(4% ABV)

6 x 175ml Glasses of
Wine (13% ABV)

14 x 25ml measures of
40% spirits